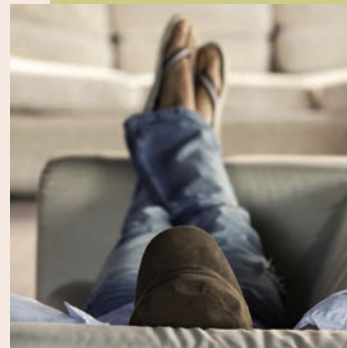


## amenities

### THE CONVENIENCES:

- One, two & three bedroom townhomes
- Large closets
- Private entry
- Large kitchen with pantry/select units
- Washer and dryer in home
- Garages available
- Free Mt. Park Rec. Center membership
- Security enforcement



### EXQUISITE SETTING:

- Beautiful mountain-top viewpoint
- Mature trees, park-like setting
- Pathways and walking trails
- Fully-maintained landscaping



call for a tour  
**503-636-8572**



From Downtown, take I-5 to the Capitol Hwy. exit and go South.  
Upon entering Mountain Park, road will become Kerr Parkway.  
Look for our entrance on the right past the light.

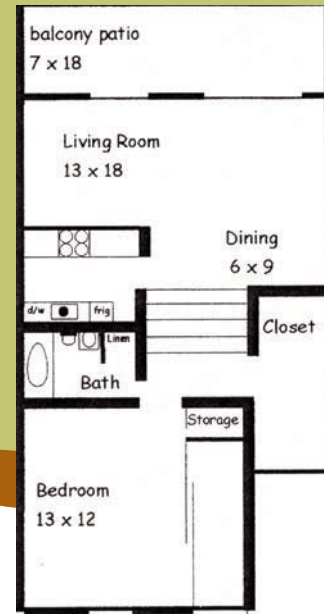


50 Kerr Parkway  
Lake Oswego, OR 97035  
**P: 503-636-8572**  
F: 503-635-8976



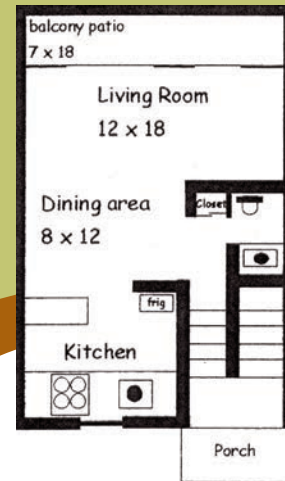
*peaceful, mountain-top living*

Each spacious home interior is finely crafted with custom designer appointments, and is surrounded by the magnificence and natural beauty of our mountain-top views.



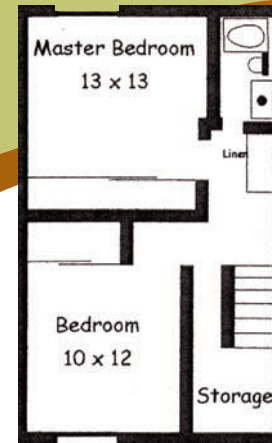
the *birchwood*  
one bedroom  
789 Square Feet

\$ \_\_\_\_\_



the *cedarwood*  
two bedroom  
1102 Square Feet

\$ \_\_\_\_\_

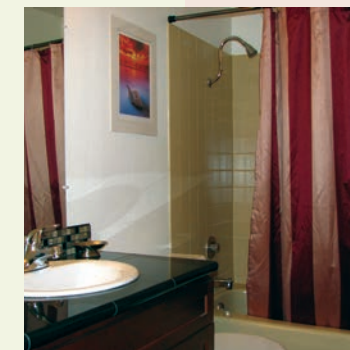
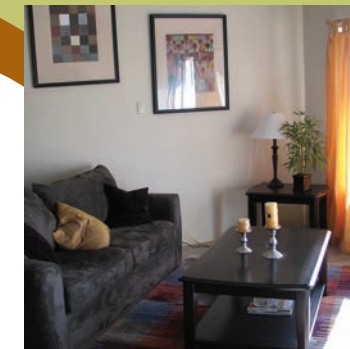
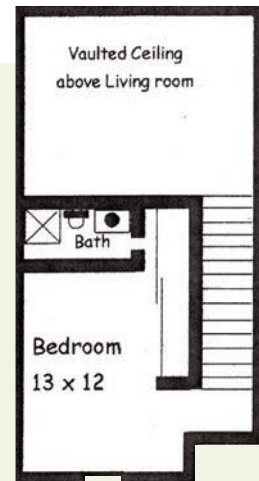
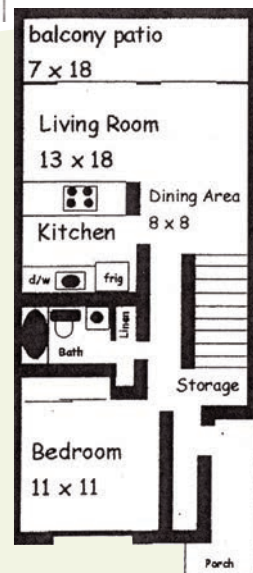


the *oakwood*  
three bedroom  
1500 Square Feet

\$ \_\_\_\_\_

the *pinewood*  
two bedroom  
1145 Square Feet

\$ \_\_\_\_\_



application fees:

\$ \_\_\_\_\_

pet fees:

\$ \_\_\_\_\_

concessions:

\$ \_\_\_\_\_

